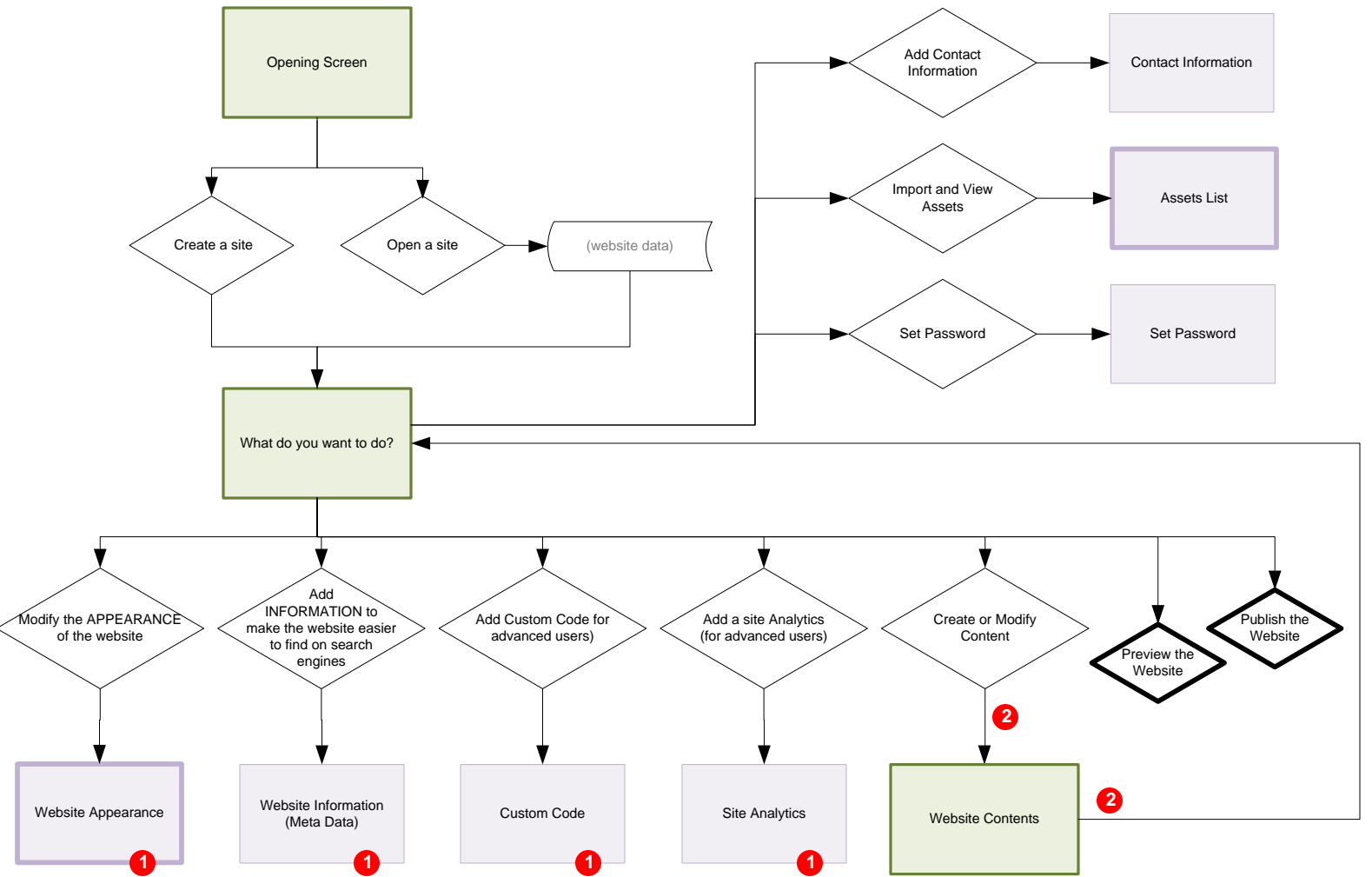


# Deco Mobile Application

FILENAME	DATE
DecoMobile_SiteMap_and_Wireframes	8/13/2010
DESCRIPTION	
Recommended UI Flow and Design for DecoMobile V2	

## UI Flow | Overview



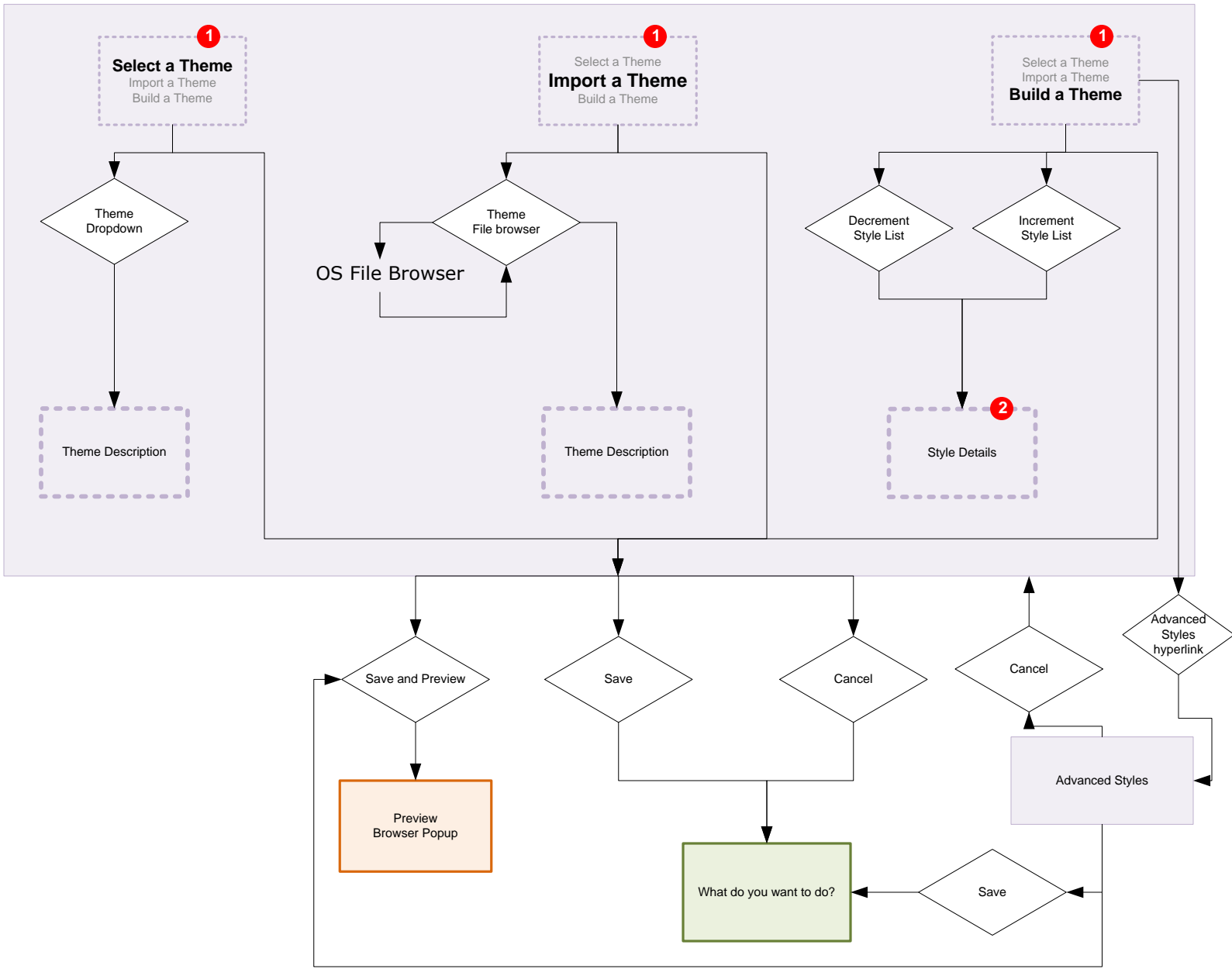
**1** Saving or Cancelling from the overlay screen will return user to the “What do you want to do?” screen.

**2** Sliding screen transition keeps the user connected and engaged to the application.

### Legend

- Full Screen
- Overlay Screen
- Overlay Screen (contains additional interactions, see sitemap details)
- Action
- End Action (does not lead to a screen)
- Data

# UI Flow | Website Appearance



**1** Radio buttons control the contents and user flow of the Website Appearance screen.

**2** Style details isolate style classes so users aren't overwhelmed. Style class property values are entered here. Detail displays are controlled by an increment/decrement control. By default, the first value field is Theme Description.

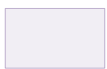
## Legend



Full Screen



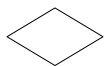
Browser Popup Screen



Overlay Screen



Internal screen details

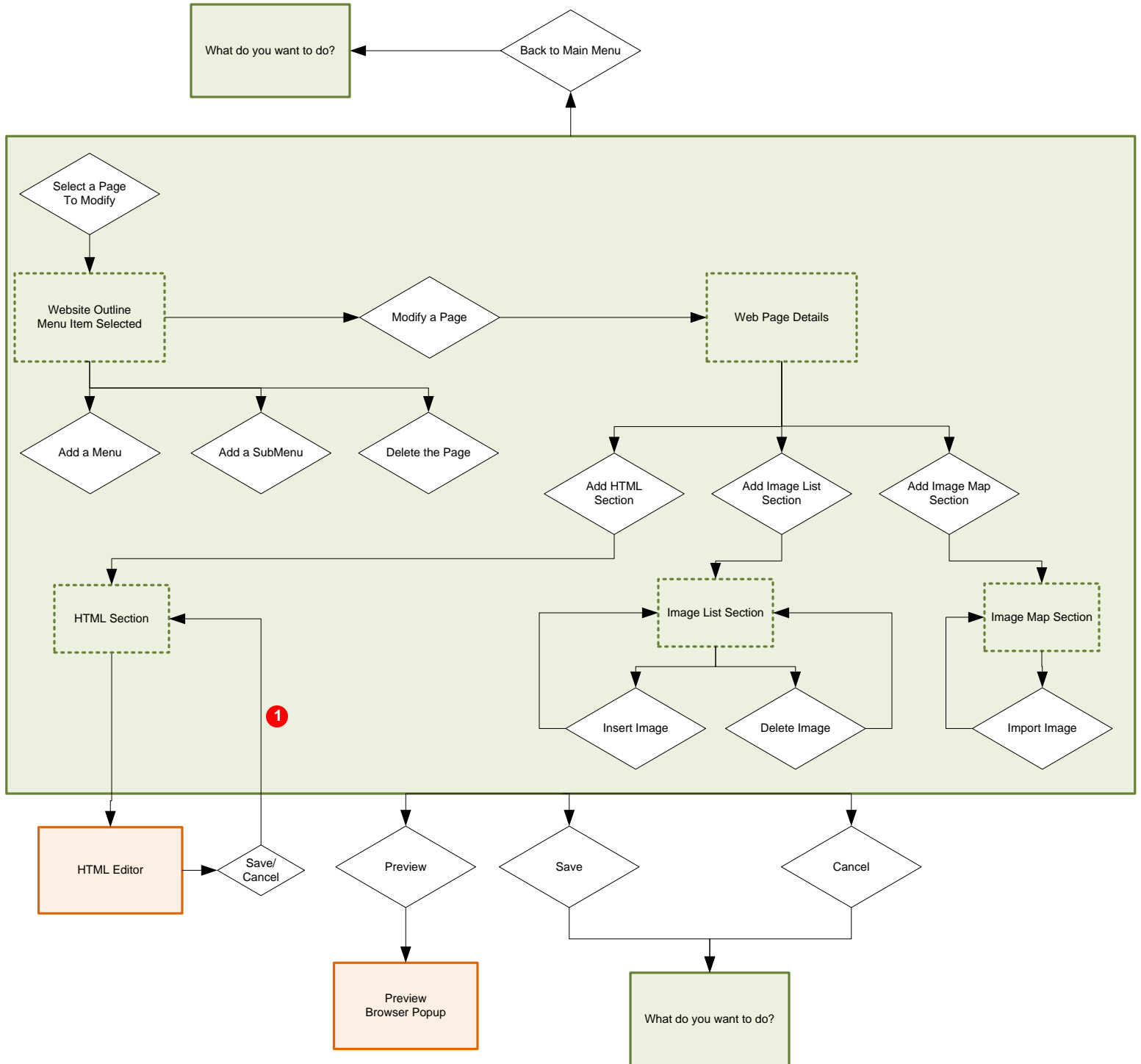


Action



End Action (does not lead to a screen)

# UI Flow | Modify Webpage



**1** The content created in the external HTML Editor popup should be propagated to the HTML Section final display format.

## Legend



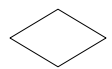
Full Screen



Internal screen details



Browser Popup Screen



Action

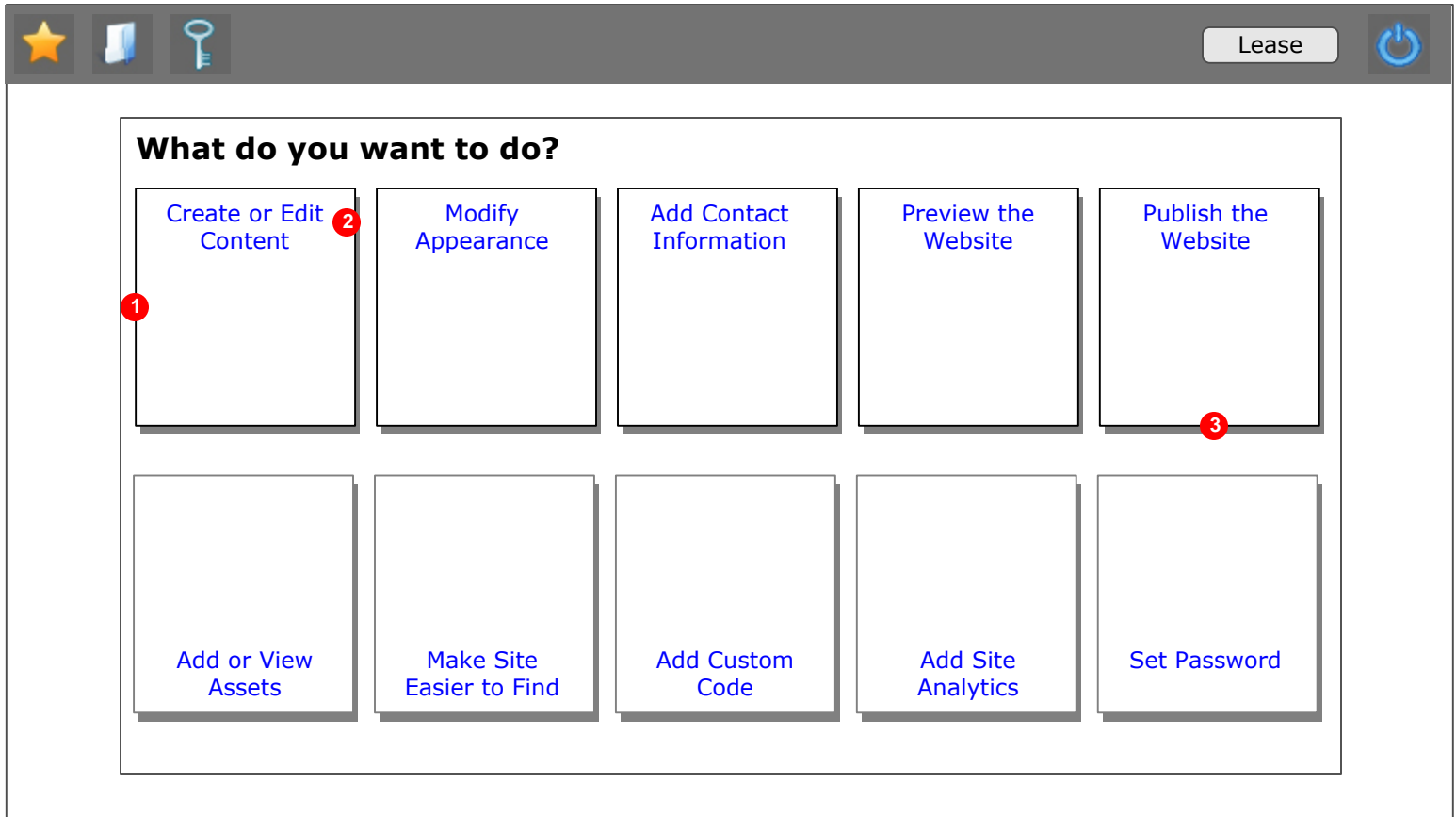
# Wireframe | Opening Screen 1



1 This screen is not changed from the current developer implementation.

2 When create a new site or Open a site is pressed this screen will TRANSITION to the MAIN MENU (What do you want to do?) screen.

# Wireframe | Main Menu (What do you want to do?)

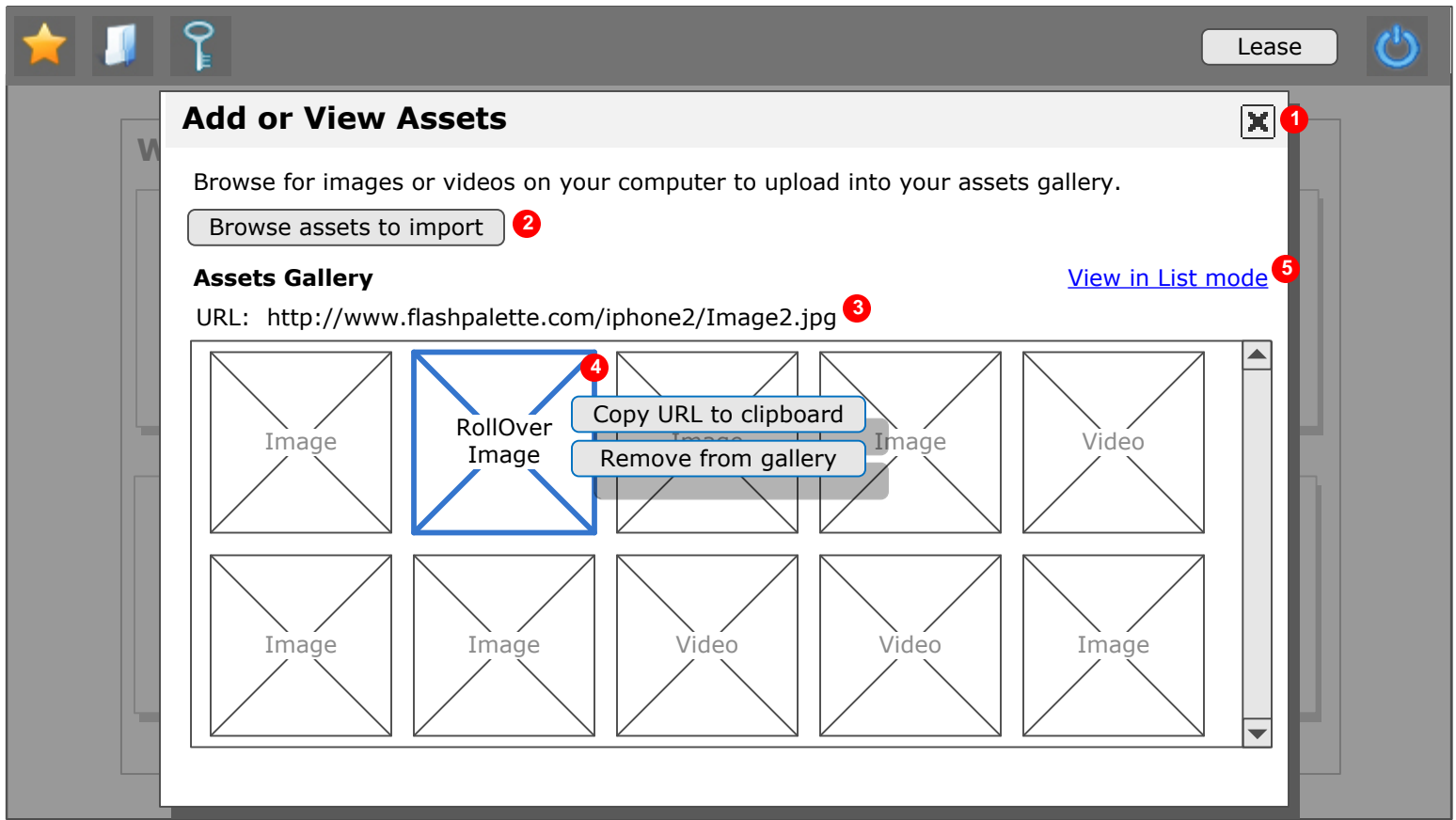


**1** The choices are presented as a “card view” with large icons representative of the action. **People respond well to images over a list of text.** The recommended imagery for the icons are as follows:

- Add or View Assets (Arrow pointing into a Box)
- Create or Edit Content (Star on a Page)
- Modify Appearance (Paintbrush with colors)
- Preview the Website (Eye)
- Publish the Website (Broadcast tower -or- DONE stamp)
- Add Contact Information (Mail letter and phone)
- Make Site Easier to Find (Text block with Magnifying Glass magnifying the word “description”)
- Add Custom Code (code programming imagery)
- Add Site Analytics (Number with the word “Visitors” underneath)
- Set Password (Safe)

**2** This is the only selection that transitions to a FULL SCREEN. All the other choices except PREVIEW and PUBLISH spawn overlay popups.

**3** The PUBLISH selection will open a new browser to allow viewing of the published website.




- 1 This popup is an overlay over the main menu. When exited the overlay disappears and users are returned to the main menu.
- 2 The Browse Images button opens up the local OS select file dialog (not shown). Selecting the file populates the embedded Assets Gallery.
- 3 When an image is rolled over or selected, the URL is displayed. When nothing is selected, the URL does not display.
- 4 In Thumbnail mode (the preferred and default presentation), when users roll over or selects a thumbnail image action buttons in a small menu appear allowing users to take action. Users may Copy URL to clipboard for pasting or they may Remove the image from the assets gallery.
- 5 List mode/Thumbnail mode hyperlink. Clicking this will toggle the assets gallery view (see below)

## Assets Gallery

[View in Thumbnail mode](#)

URL: http://www.flashpalette.com/iphone2/Image2.jpg

Image Name	Asset Type	Remove	URL
Image1.jpg	Image		Http://www.flashpalette.com
<b>Image2.jpg</b>	Image	 (6)	Http://www.flashpalette.com
Image3.jpg	Image		Http://www.flashpalette.com
Movie.mov	Video		Http://www.flashpalette.com
SomeMovie5.avi	Video		Http://www.flashpalette.com
A long name for Image6.jpg	Image		Http://www.flashpalette.com
Image7.jpg	Image		Http://www.flashpalette.com
Image8.jpg	Image		Http://www.flashpalette.com
Image9.jpg	Image		Http://www.flashpalette.com

- 6 The ability to delete list items are inline with the Assets Gallery table. Behavior is identical to the image deletion in Thumbnail mode. The delete control is revealed on cursor roll over of list item row.

The wireframe shows a 'Contact Information' dialog box overlaid on a main menu. The dialog box has a title bar with a close button (marked with a red '1') and a 'Lease' button in the top right corner. The main menu has a star icon, a document icon, and a key icon. The dialog box contains the following fields:

- How do you want to be contacted? (dropdown menu with 'email' selected, marked with a red '2')
- Label for Contact Button: (text input field)
- Contact Email Address: (text input field)
- Email Subject: (text input field)
- Email Body: (text area)

At the bottom of the dialog box are 'Save' and 'Cancel' buttons.

**1** This popup is an overlay over the main menu. When exited the overlay disappears and users are returned to the main menu.

**2** The dropdown choices are: 1) email and 2) telephone. When “telephone” is chosen the email fields are replaced by the phone number field (see below).

The wireframe shows the 'Contact Information' dialog box with 'telephone' selected in the dropdown menu. The dialog box contains the following fields:

- How do you want to be contacted? (dropdown menu with 'telephone' selected)
- Label for Contact Button: (text input field)
- Contact Phone Number: (text input field)

At the bottom of the dialog box are 'Save' and 'Cancel' buttons.

**Password** ✕ **1**

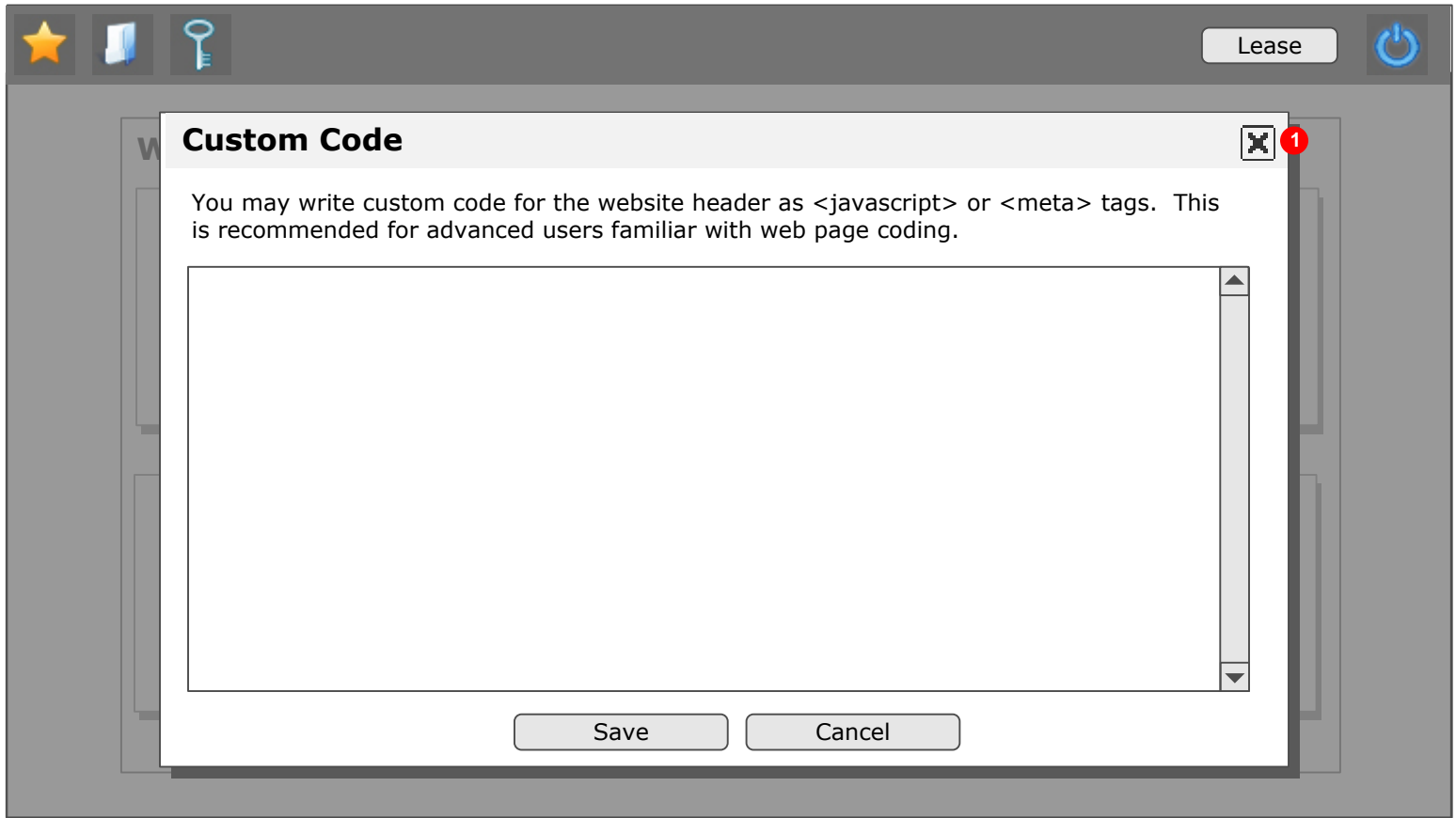
You may set up password protection for your site. If the password field is cleared blank then there no password is required to enter the generated website.

Old Password:

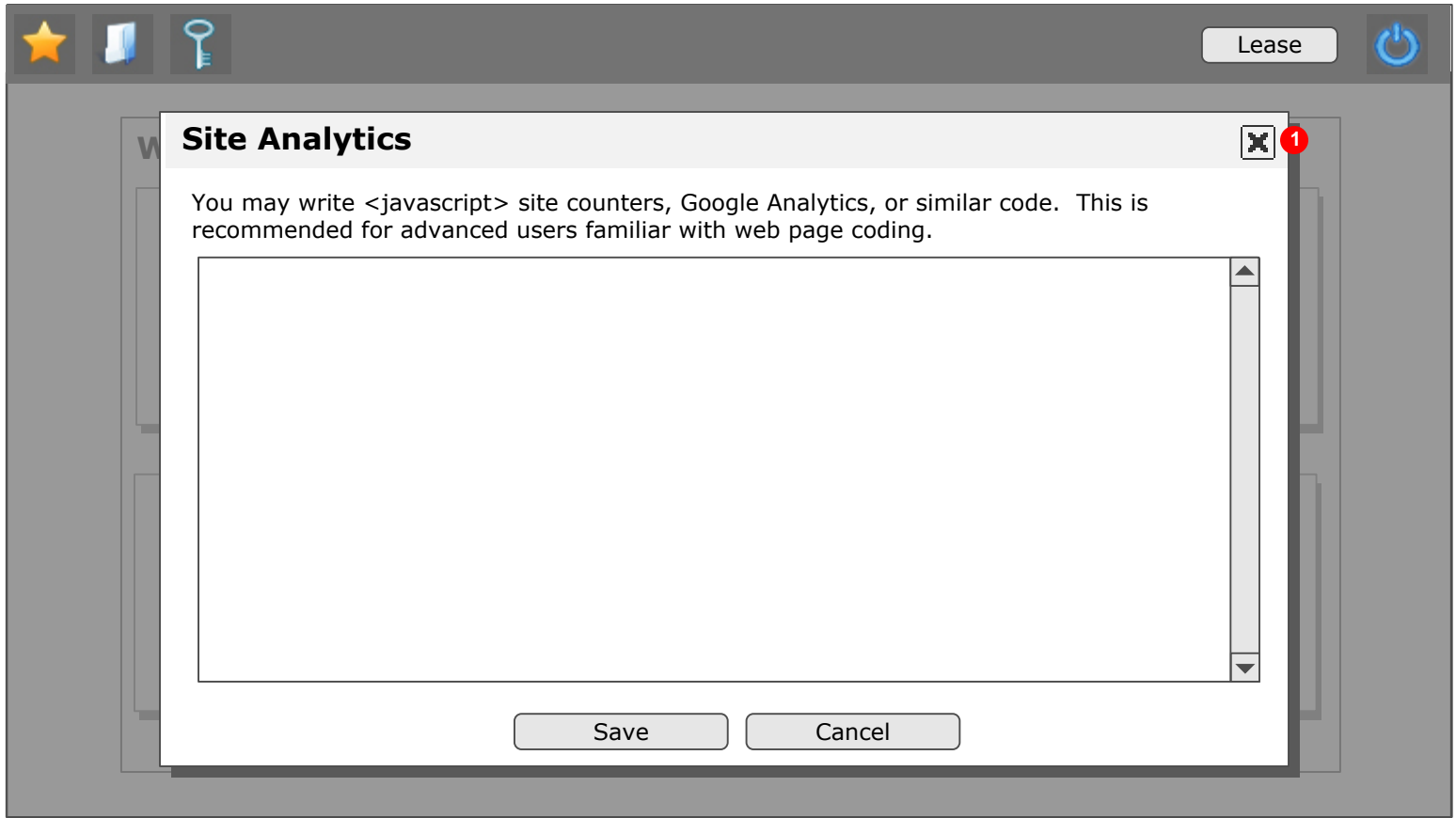
New Password:

Confirm New Password:

**1** This popup is an overlay over the main menu. When exited the overlay disappears and users are returned to the main menu.



**1** This popup is an overlay over the main menu. When exited the overlay disappears and users are returned to the main menu.



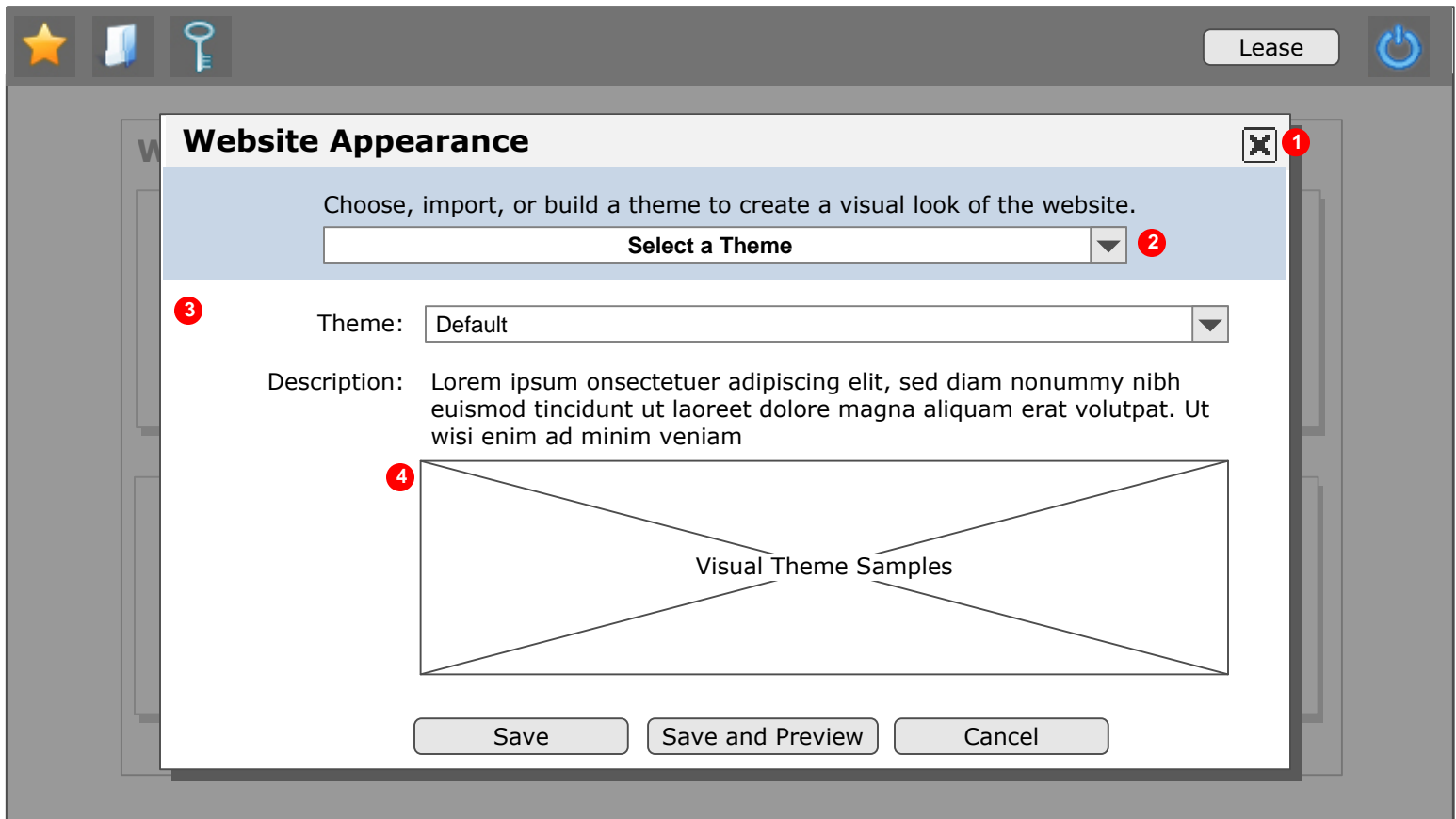
**1** This popup is an overlay over the main menu. When exited the overlay disappears and users are returned to the main menu.

The image shows a wireframe of a software interface. At the top, there is a navigation bar with a star icon, a document icon, a key icon, a 'Lease' button, and a power icon. Below this is a main menu area. A modal dialog box titled 'Website Information to make site easier to find' is overlaid on the main menu. The dialog box has a close button in the top right corner, marked with a red circle and the number '1'. Inside the dialog, there is a text prompt: 'Enter optional website information to make the site easier to find by internet search engines.' Below this are three input fields: 'Website Title:' (a single-line text box), 'Keywords:' (a multi-line text box with scrollbars, marked with a red circle and the number '2'), and 'Description:' (a large multi-line text box with scrollbars). At the bottom of the dialog are two buttons: 'Save' and 'Cancel'.

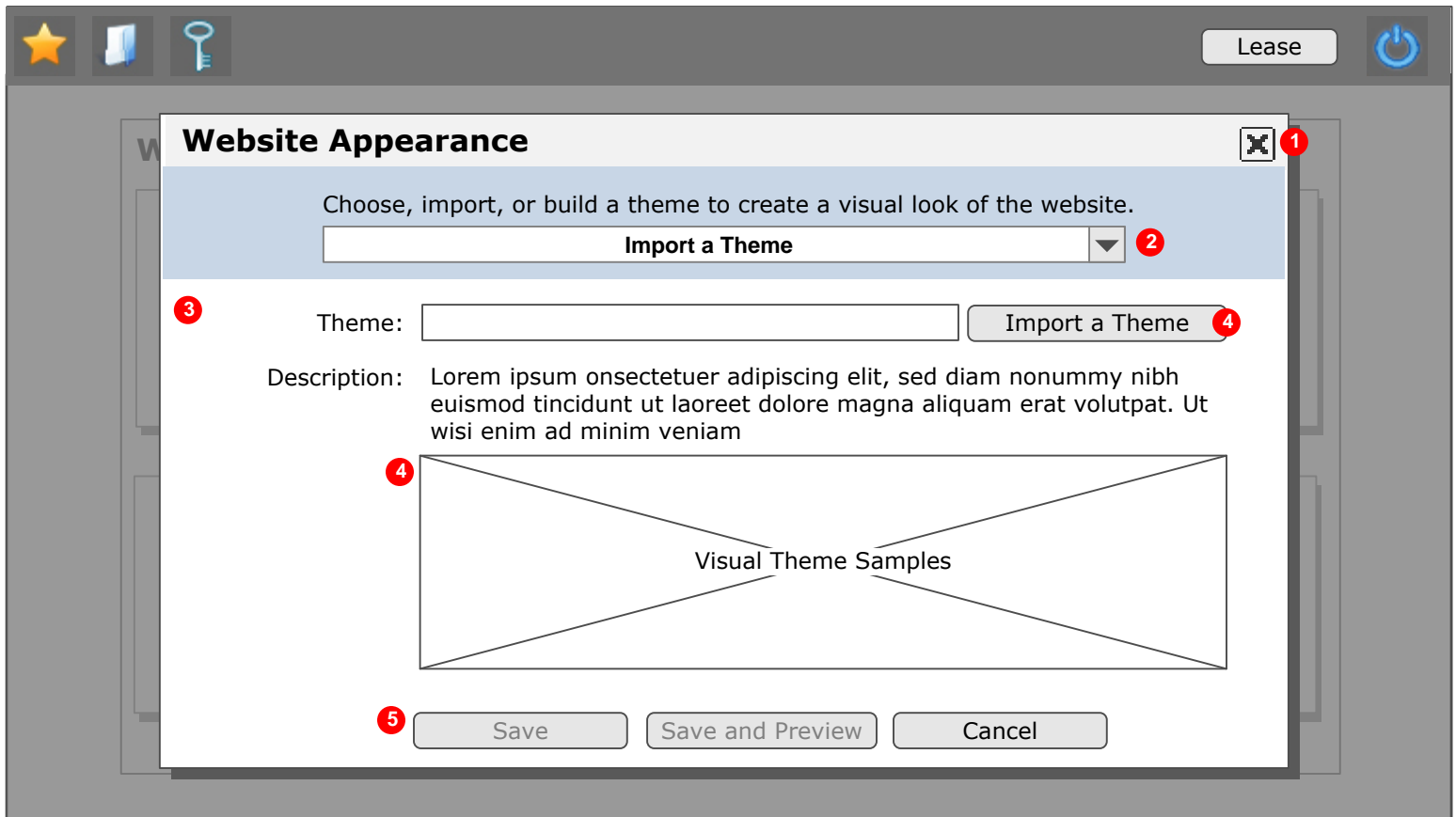
1 This popup is an overlay over the main menu. When exited the overlay disappears and users are returned to the main menu.

2 These fields are the metadata for the site. The distinction that this is the site metadata is unnecessary for the user's knowledge.

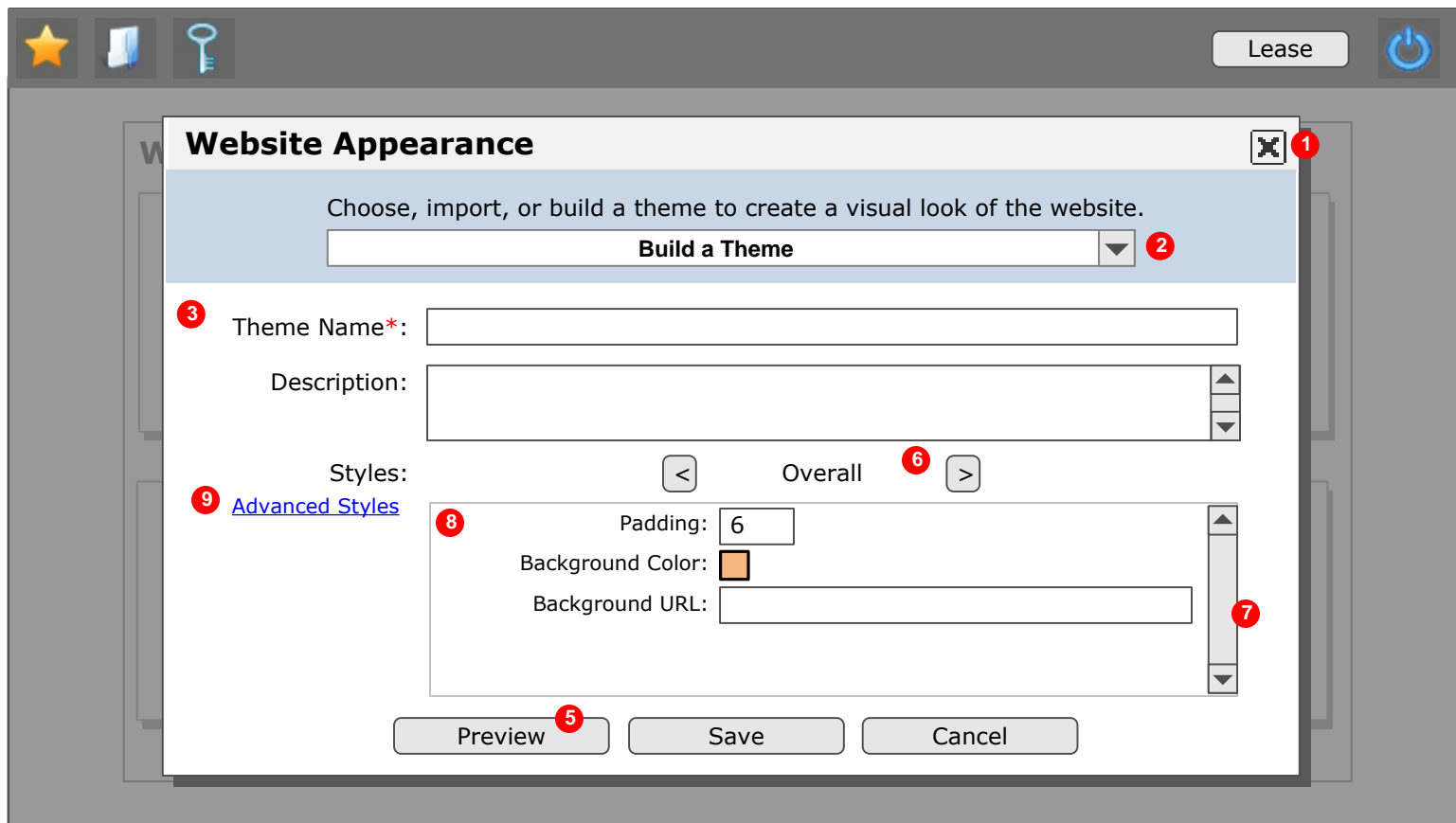
# Wireframe | Modify Website Appearance – Select a Theme



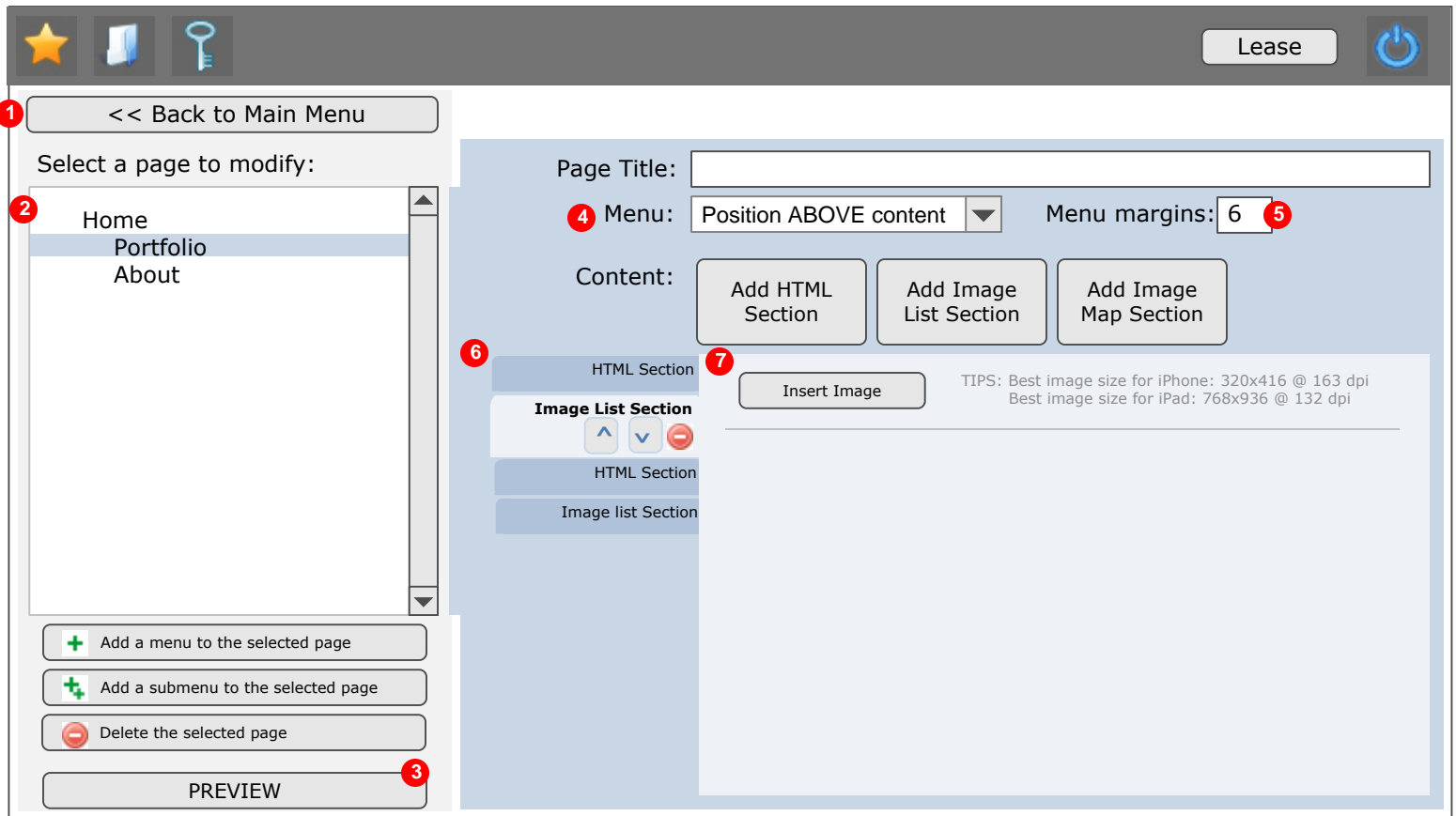
- 1 This popup is an overlay over the main menu. When exited the overlay disappears and users are returned to the main menu.
- 2 The dropdown selections will change the UI below. Dropdown selections are: 1) Select a Theme, 2) Import a Theme, and 3) Build a Theme
- 3 The UI in this area will change depending on the selection above. When the selection changes there is a visual transition.
- 4 Visual samples will display as a part of the description for themes. Display could include fonts, headers, colors, and other style basics.



- 1 This popup is an overlay over the main menu. When exited the overlay disappears and users are returned to the main menu.
- 2 The dropdown selections will change the UI below. Dropdown selections are: 1) Select a Theme, 2) Import a Theme, and 3) Build a Theme
- 3 The UI in this area will change depending on the selection above. When the selection changes there is a visual transition.
- 4 Visual samples will display as a part of the description for themes. Display could include fonts, headers, colors, and other style basics.
- 5 The Preview and Save buttons are disabled until a theme is imported. While in a disabled state, any attempts to press the Preview or Save button will create an alert message that says that a theme must be chosen before the preview or save could occur.



- 1 This popup is an overlay over the main menu. When exited the overlay disappears and users are returned to the main menu.
- 2 The dropdown selections will change the UI below. Dropdown selections are: 1) Select a Theme, 2) Import a Theme, and 3) Build a Theme
- 3 The UI in this area will change depending on the selection above. When the selection changes there is a visual transition.
- 4 The Import a Theme button opens up the local file search dialog for the Operating System. (not shown)
- 5 The Preview and Save buttons are disabled until a theme name is given. While in a disabled state, any attempts to press the Preview or Save button will create an alert message that says that a theme name must be created before the preview or save could occur.
- 6 User is able to cycle through a list of style elements. The style classes are presented as named style elements with a more natural language.
  - Header text (body > h1)
  - Standard Buttons (.button)
  - Standard Text (body)
  - Back Button (#backButton)
  - HTML Section Margins (.textSection)
  - Image List Section Margins (.ImageListSection)
  - Image Map Section Margins (.galleryItem)
  - Lists (body > ul)
  - List Items (body > ul > li)
  - List Item Margins (body > ul > li > a)
  - Overall (.page)
- 7 The vertical scrollbar will only appear if necessary. Ideally this should not be needed.
- 8 The style element properties are listed here in a single column in a vertical format.  
NOTE: Field labels are right aligned. Field values are left aligned.
- 9 An “Advanced Styles” hyperlink opens up a 2<sup>nd</sup> full screen overlay that displays ALL style classes for editing at the same time. When this overlay is saved it will close both the advanced styles overlay and the original Build a Theme overlay. If the advanced overlay is cancelled then the user is returned to the Build a Theme overlay.



- 1 Going BACK and forth between this screen and the main menu is a horizontally sliding transition.
- 2 The website outline behaves as it currently exists.
- 3 The PREVIEW button allows previewing of web pages.
- 4 Menu properties are all on one line. The dropdown choices are: 1) Position ABOVE content 2) Position BELOW content
- 5 This is a NUMERIC STEPPER UI component.
- 6 The left TAB sections behave as it currently exists.
- 7 Section controls and other details will be in its own area at the top of the content box.